



CRAIN



No. 140 Heavy-Duty Hammer Tacker Operating Instructions

SAFETY:

- Wear safety goggles at all times. Never point the stapler at your eyes.
- Do not point the stapler towards any person including yourself. In operation, the staple striker should be pointed downward at all times.
- Do not staple near live electrical wires. Serious risk of electric shock may result.
- Keep hands away from the stapler striker. Do not activate it by hand. Danger to fingers or hands may result from ejecting staples.
- Assume the tool is loaded with staples at all times.
- Do not use the top surface of the tool as a hammer, this may unexpectedly eject a staple, or damage the stapler. See figure 1.

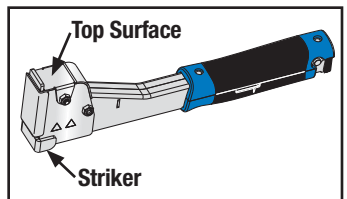


Figure 1

STAPLES:

- This stapler works with Duo-Fast® 7512 $\frac{3}{8}$ " leg, 7516 $\frac{1}{2}$ " leg, or 7518 $\frac{9}{16}$ " leg crown staples or generics. See figure 2.
- Do not use staples other than these which are specified. Jamming, unsafe operation, and damage to the tool may result.
- This tool will not work with staples designed for an Arrow® stapler.

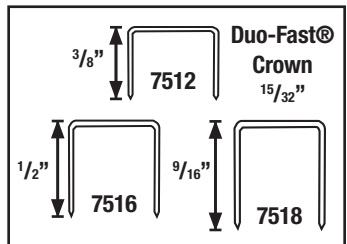


Figure 2

OPERATION:

LOADING:

- Remove the staple pusher by pressing the tab in and pulling down. See figure 3.
- Slide up to two rows of staples into the back of the magazine. See figure 3.
- With partial (broken-off) rows of staples, you can fill staples all the way up to the notch under the staple window and still be able to replace the staple pusher (figure 4).
- Replace the staple pusher. The stapler is now ready to drive staples.
- To determine the amount of staples presently in the magazine, remove the staple pusher. Then, lightly reinsert the staple pusher until it first gives a stopping resistance. The visible part of the staple pusher projecting out the back gives an indication as to the amount of staples already in the magazine. See figure 5.

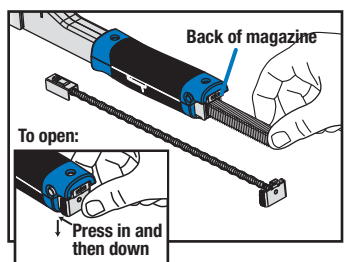


Figure 3

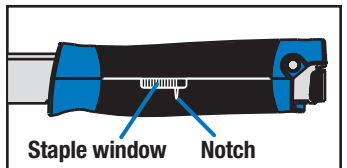


Figure 4

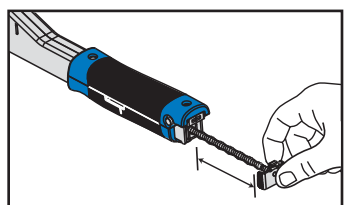


Figure 5

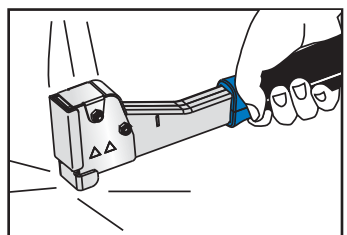


Figure 6

DRIVING STAPLES:

- Take the stapler by the handle and hammer the striker end into the material to be stapled. This will drive one staple into the material. The striker should be pointed downward at all times. See figure 6.

CLEARING A JAM (Figure 7):

To disassemble the magazine and driving head:

- Remove the staple pusher.
- Remove the rear locking pin.
- The inside surfaces of the driving head and magazine are now exposed for cleaning out jammed staples or other debris which may be causing the jam.

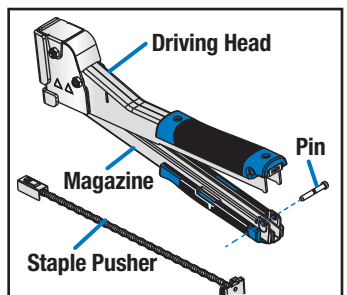


Figure 7

© Duo-Fast® is a registered trademark of the Duo-Fast® corporation.
© Arrow® is a registered trademark of the Arrow Fastener Company, Inc.

GUARANTEE

This Hammer Tacker is guaranteed to be free of defects in workmanship or quality of materials for a period of 90 days.

Any parts of the tool found to be defective subject to the guarantee will be replaced at no charge. Credit in full or part cannot be extended by the distributor, nor will new tools be given as replacements or loaners.

Tools subject to this warranty must be accompanied by same, and returned freight PREPAID to Milpitas, CA, and must be in assembled condition.

CRAIN CUTTER CO., INC.
Milpitas, CA 95035