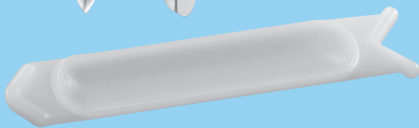




**TRIM LINE®
VINYL CORNERS
SYSTEM**



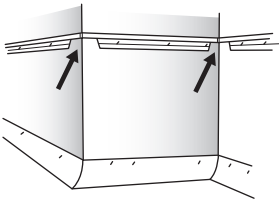
GOLD
OR
SILVER
COLORS



DISTRIBUTED BY

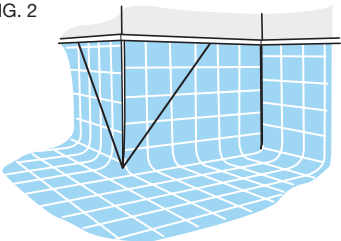
FOLLOW THESE SIMPLE INSTRUCTIONS!

FIG. 1



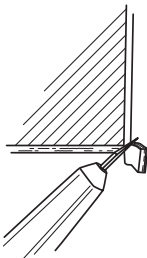
Install cap metal and cove stick as usual. The back flange of the cap metal needs to be removed for 1/2" on both sides of the corner. (See arrows, figure 1.)

FIG. 2



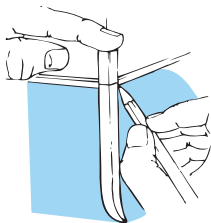
The material must be fitted tight against the cove stick and wall. The triangular type of corner is best-suited for the Trim Line Corners. (See figure 2.)

FIG. 3



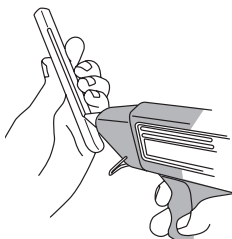
In order to fit the metal Trim Line Corner flat against the material; remove any excess material from the outside of the corner. Use caution not to remove more than necessary. (See figure 3.)

FIG. 4



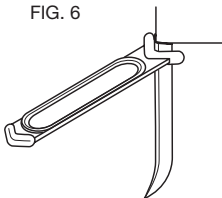
Form the radius of the Trim Line Corner to match the radius of the cove for a good, tight fit. Mark the top of the Trim Line Corner to leave enough material to allow it to slide under the cap metal, and cut. (See figure 4 and Helpful Hint #3 - next page.)

FIG. 5



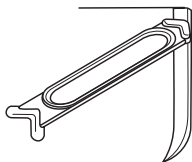
With an electric glue gun, apply a 1/8" bead of hot melt adhesive to the center of the back side of the Trim Line Corner. (See figure 5.)

FIG. 6



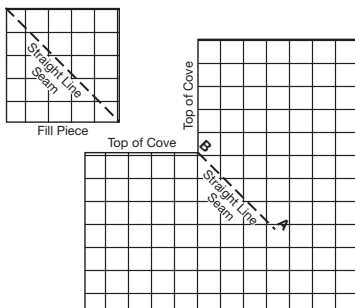
Without delay, apply the Trim Line Corner to the material and press down its length with the "V" side of the plastic applicator provided. (See figure 6.)

FIG. 7



For inside corners, follow the same fitting and gluing procedures, and press with the "point" of the plastic applicator. (See figure 7.)

OUTSIDE CORNER PATTERNING PROCEDURE



Point A is approximately halfway up the miter joint on the coveside.

Point B is where the top edges of the two coves meet in the flat pattern.

Cut a straight seam between A and B.

Using a separate piece of vinyl for your fill piece, place under material and match pattern using the A & B seam line as a guide.

This will create the seam edge for both fills.

HELPFUL HINTS

1. Pre-match the material following the outside corner patterning procedure above.
2. For heavily embossed materials, or when a sealing of the metal to the material is desired, apply a bead of non-shrinking caulking to the edges with a clean, damp rag.
3. With extra-thick materials, it may be necessary to enlarge the opening of the cap metal for easy access to slide the Trim Line Corner under the cap metal.

Order No.	Description
270	Outside Silver Corner
271	Inside Silver Corner
272	Outside Gold Corner
273	Inside Gold Corner

◆ CRAIN CUTTER CO., INC.

MILPITAS, CA 95035 • PH: (408)946-6100

Printed by: HF

FORM F009 10/2017