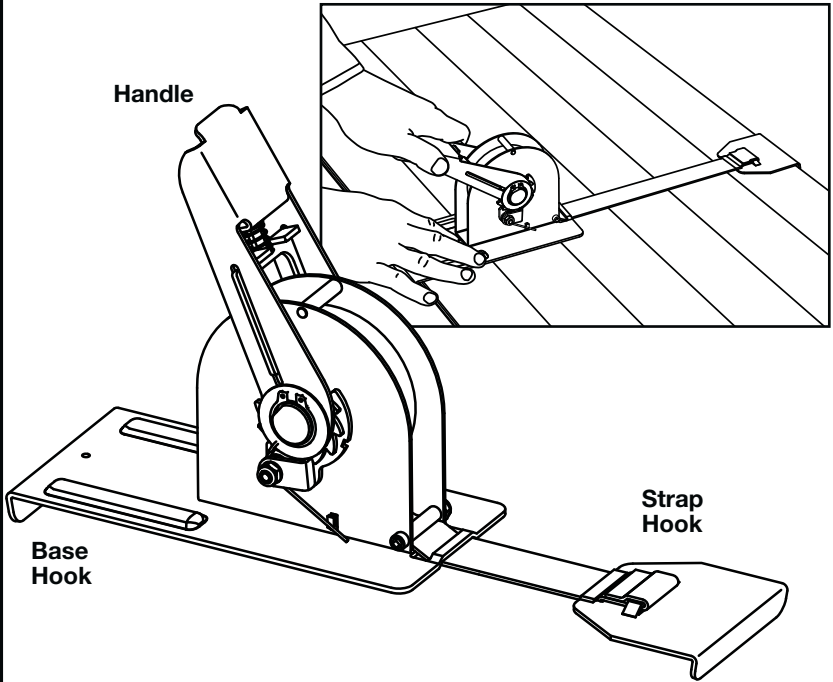


# INSTRUCTION MANUAL FOR

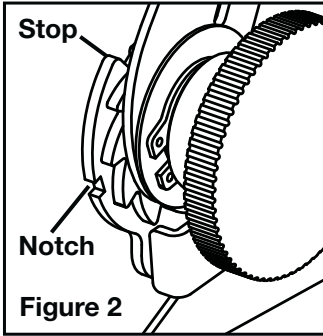


# CRAIN

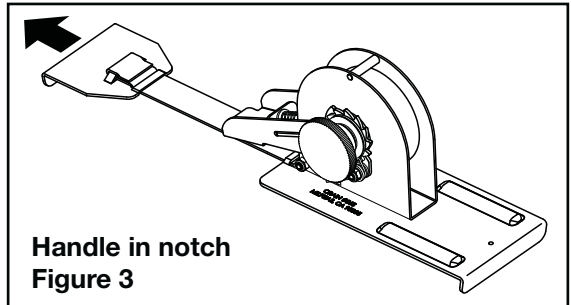
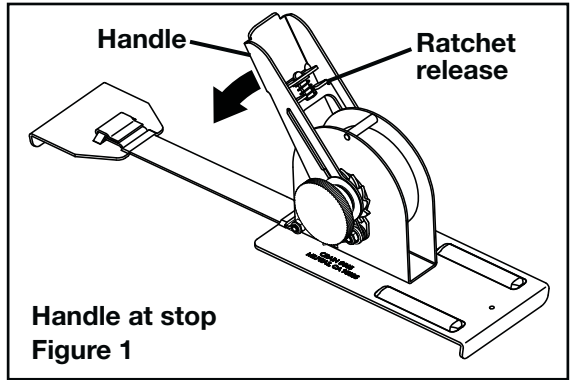
**No. 565**

**18' STRAP CLAMP**

# RELEASE RATCHET AND PULL OUT STRAP:



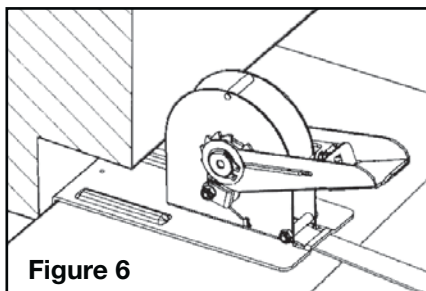
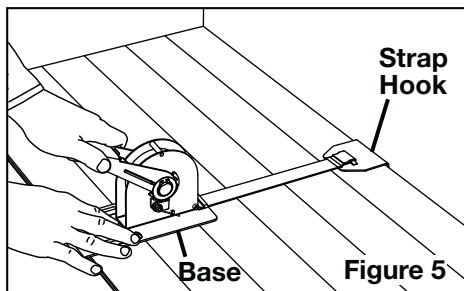
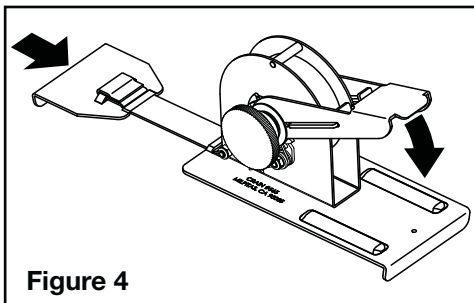
Insert ratchet release in the notch on the housing



1. Rotate handle counter-clockwise until it reaches the stop (Figures 1 and 2).
2. Lift the spring-loaded ratchet release (Figure 1) and continue rotating the handle counter-clockwise past the stop (Figure 2).
3. At the angle shown in Figure 3, the ratchet release will engage the notch (Figure 2). This causes the ratchet to release.
4. Pull out the desired amount of strap.

## TO RETRACT STRAP:

1. If the ratchet is released, lift the ratchet release and turn handle clockwise to remove it from the notch.
2. Rotate the handle clockwise to retract strap for clamping (Figure 4).

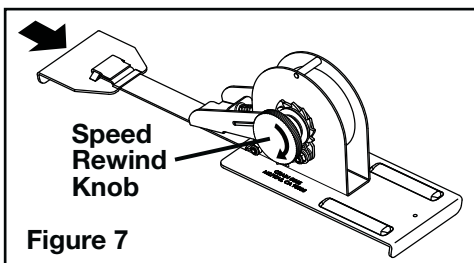


## CLAMPING PLANKS:

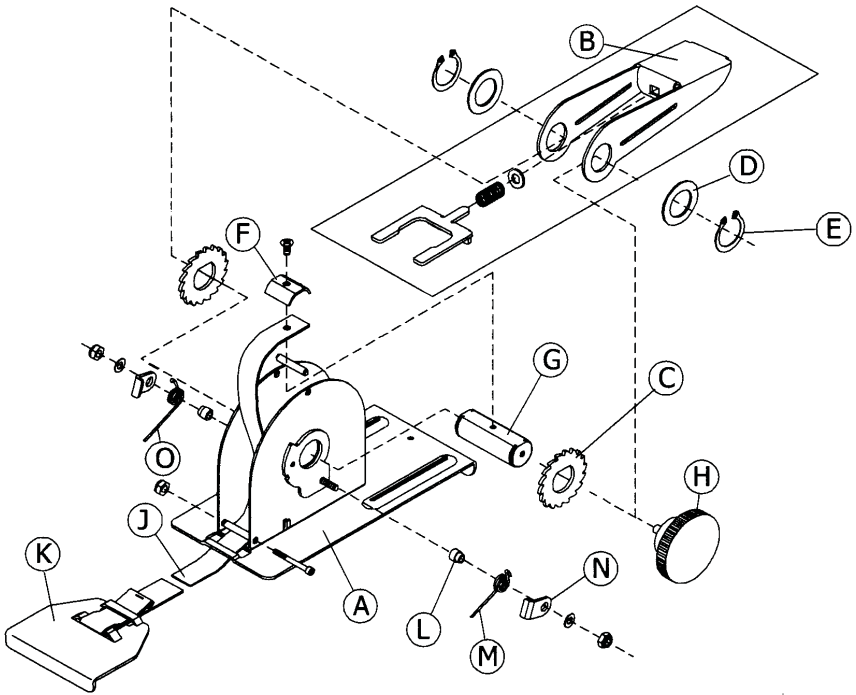
1. Pull the strap out and hook the strap hook at the first row of boards at the wall.
2. Hook the base hook at the last row of boards. The long base extends under toe kicks if needed (Figure 6).
3. Hold down the base against the floor (Figure 6).
4. Retract the strap by pressing down on the handle (Figure 5). Raise the handle and push down again until the ratchet creates the desired tension. NOTE: excessive tension can cause boards to buckle.

## SPEED REWIND:

The strap can be retracted rapidly by releasing the ratchet and turning the knob clockwise (Figure 7).



# REPLACEMENT PARTS:



## NO. 565 18' STRAP CLAMP

<b>Order No.</b>	<b>Description</b>
1565-A	Bracket Assembly
1565-B	Handle Assembly
1565-C	Ratchet Wheels (2)
1565-D	Washer Set (2)
1565-E	Snap Ring Set (2)
1565-F	Strap Holder & Screw
1565-G	Axle
1565-H	Speed Rewind Knob
1565-J	18' Strap
1565-K	Hook
1565-L	Locker Bushing Nut Set (3)
1565-M	Torsion Spring (Silver)
1565-N	Locker
1565-O	Torsion Spring (Black)