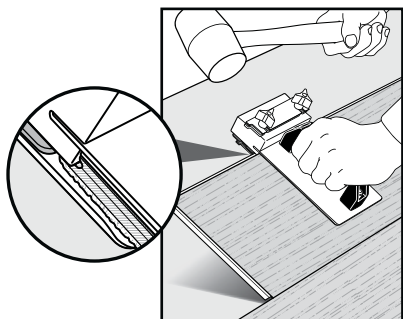
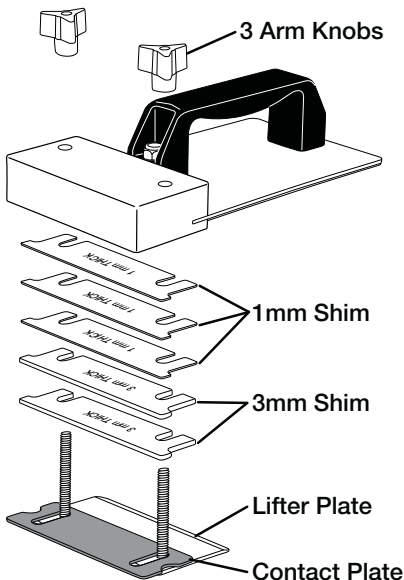
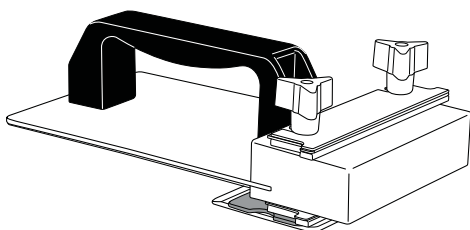


◀▶ **CRAIN** Instructions for **No. 576 Angle LVP Tapping Block**



CAUTION: NOT ALL PLANKS CAN BE TAPPED! SOME THIN OR DELICATE PLANKS CAN BE DAMAGED. FOLLOW MANUFACTURER'S RECOMMENDATIONS. TEST TAPPING IS ALSO RECOMMENDED.

Includes:

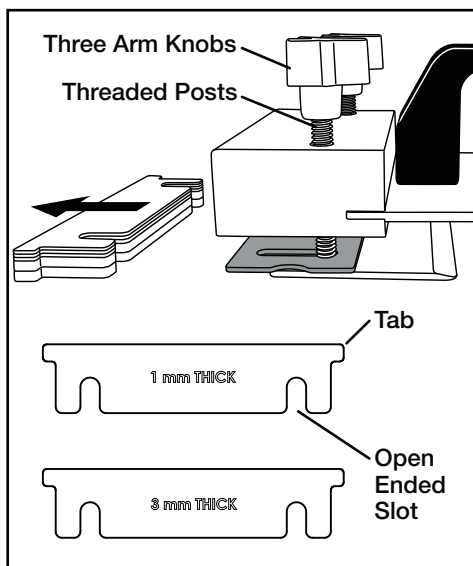
- Two 3mm Shims
- Three 1mm Shims
- Slideable Contact Plate

Adjustment:

Step 1: Fully loosen the three arm knobs. Remove all shims.

The shims have open-ended slots allowing them to easily be removed or inserted from the threaded posts on the tool by simply pulling them out.

The shims also have tabs on both sides, making it easy to pull out or push in shims using a fingertip.



Step 1 - Remove All Shims

Step 2: Position the tool on top of the plank and push the white upper block against a surface on the side of the plank which can be tapped without damaging it. The bottom metal lifter plate falls to the subfloor and slides beneath the plank.

Fill in the gap between the grey plastic contact plate and the white upper block with shims. The fewer the shims used, the tighter the tool fits the plank. If a looser fit is preferred, add an additional shim.

Step 3: If desired, to better distribute the force of impact against the plank, push the grey plastic contact plate against the side (core) of the plank.

Place any shims that are not in use on top of the white upper block, and tighten down the three arm knobs.

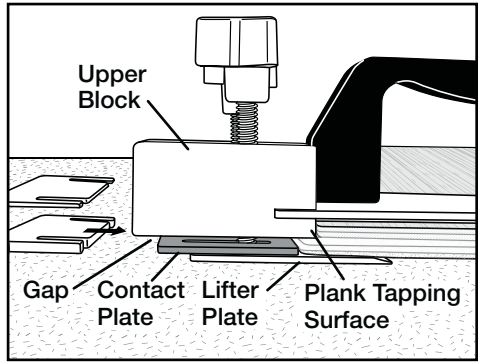
Step 4: The tool is adjustable to work on either side of the plank.

The grey plastic contact plate can be placed at different elevations to contact the center of the core by placing shims underneath it as necessary. Lift the grey plastic contact plate and slide shims underneath.

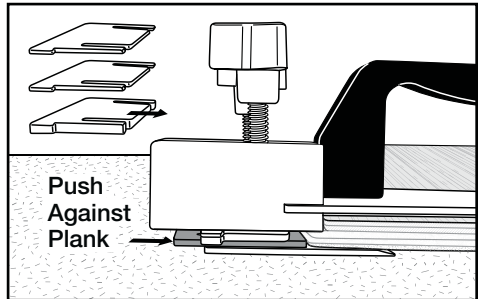
Slide the grey plastic contact plate forward or backward as necessary to contact the core of the plank. Shims can be added on top of the contact plate to fill the gap up to the white upper block. Tighten down the three arm knobs.

THE GREY PLASTIC CONTACT PLATE IS A WEAR PART REQUIRING REPLACEMENT. Order No. 579 Contact Plate for LVP Block.

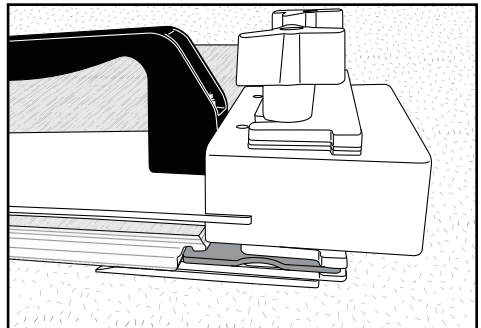
Extra shims sold separately. Order No. 577 1mm Shim for LVP Block or No. 578 3mm Shim for LVP Block.



Step 2 - Position Tool & Fill in Shims



Step 3 - Push Contact Plate Against Core Put Unused Shims on Top



Step 4 - Shims Under the Contact Plate