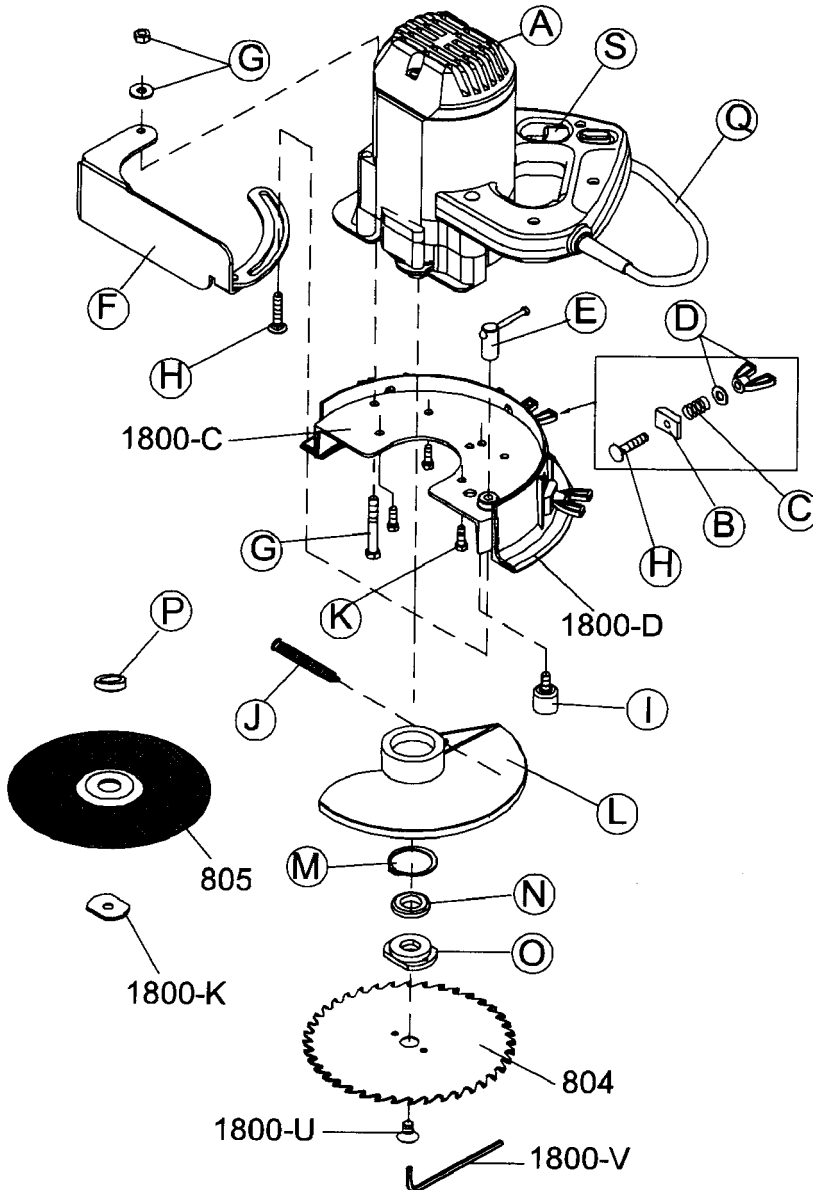


No. 810 Super Saw



NO. 810 SUPER SAW

Order No.	Description
1810-A	Power Unit - Discontinued
1810-B	Guide Washer (3)
1810-C	Guide Washer Springs (3)
1810-D	Guide Washer Wing Nut Set (3)
1810-E	Depth Gauge Locker
1810-F	Depth Gauge Assembly
1810-G	Depth Gauge Screw Set (3)
1810-H	Carriage Bolt (4)
1810-I	Blade Guard Stopper
1810-J	Blade Guard Spring
1810-K	Horseshoe Screw Set (3)
1810-L	Blade Guard
1810-M	Blade Guard Retainer Ring
1810-N	Blade Driver Spacer
1810-O	Blade Driver Assembly
1810-P	Masonry Blade Adaptor
1810-Q	Power Cord Set
1810-R	Brush Set w/Holder (not shown)
1810-S	Switch
1810-U	Gear Cover w/Bushing (not shown)
1810-W	Ball Bearing (not shown)
PARTS COMMON WITH THE 800	
1800-C	Horseshoe
1800-D	Height Adjuster - Discontinued
1800-K	Masonry Blade Clamp
1800-O	2-Piece Carrying Case
1800-P	Carrying Case Latch Set (2) - Discontinued
1800-U	Socket Set Screw
1800-V	Allen® Wrench