

- Plunge to appropriate depth. Move from left to right only.
- Do not force the saw; let blade cut at highest RPM possible.
- Remove the saw from the cut, and release the switch to stop. When the switch is released, the motor and the blade coast to a stop. **KEEP HANDS AWAY FROM THE BLADE. THE BLADE CAN CUT YOU AS LONG AS IT IS TURNING.**
- Do not remove a hand from the handles to clear debris until the saw is moved away and the blade is stopped.

### INSIDE CORNER CUTTING:

Cut towards the corner at a 45° angle until the depth gauge meets the right wall (Figure 9). Switch off and unplug the saw. Wait for the blade to stop. Fully retract depth gauge (Figure 10) and continue the cut. Push the saw into the corner as shown until the housing meets both walls (Figure 11).

**WARNING:** Depth gauge covers the blade and makes the saw safer to use. Reset the depth gauge to a safe depth of cut after cutting inside corners (see DEPTH ADJUSTMENT).

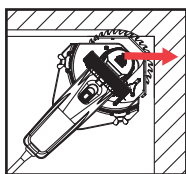


Figure 9

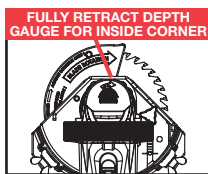


Figure 10

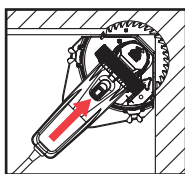


Figure 11

### MAINTENANCE:

If the saw is dropped, the blade guard may be bent or otherwise damaged, restricting full return. Sawdust that accumulates behind the blade guard can cause it to become stuck, especially drywall dust. Check operation of the blade guard before each use. Do not use saw if the blade guard does not operate properly. When not in use, store the saw in its carrying case. If the switch malfunctions, the saw motor may continue running even after being switched off. Turn off by unplugging. Repair the switch immediately! Do not use the saw with a faulty switch.

### WARNING:

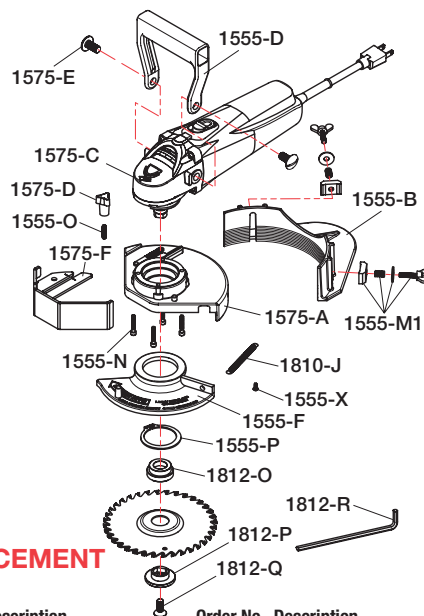
Some dust created by power sanding, sawing, grinding, drilling, and other construction activities contains chemicals known to the State of California to cause cancer, birth defects or other reproductive harm. Some examples of these chemicals are:

- lead from lead-based paints,
- crystalline silica from brick, cement and other masonry product, and
- arsenic and chromium from chemically-treated lumber.

Your risk from these exposures varies, depending on how often you do this type of work. To reduce your exposure to these chemicals: work in a well-ventilated area, and work with approved safety equipment, such as those dust masks that are specially designed to filter out microscopic particles.

**CRAIN TOOLS Milpitas, CA 95035 TEL: (408) 946-6100**

Printed by: HF FORM F0575 10/2024



### REPLACEMENT PARTS:

Order No.	Description	Order No.	Description
1555-B	Height Adjuster	1575-D	Three Arm Knob Only
1555-D	Plastic Handle	1575-E	Handle Fastener Set (2)
1555-F	Blade Guard	1575-F	Depth Gauge
1555-M1	Guide Washer & Fastener Set (8)	1575-K	Brush Set (2 - not shown)
1555-N	Housing Fastener Set (4)	1575-S	Brush Holder Assembly (2) (not shown)
1555-O	Set Screw	1575-W	Power Cord Strain Relief (not shown)
1555-P	Snap Ring	1810-J	Blade Guard Spring
1555-R	Carrying Case (not shown)	1812-O	Blade Spacer
1555-V1	Marquardt Switch (not shown)	1812-P	Blade Clamp
1555-X	Return Spring Screw Only	1812-Q	Blade Screw
1555-Z	Power Cord (not shown)	1812-R	Hex Wrench
1575-A	Housing		
1575-C	Power Unit, 120 volts		

### SPECIFICATIONS:

No Load Speed:	Electrical: 120VAC, 8.0 AMPS, 60 HZ
Maximum Depth Adjustment:	10,000 RPM
Maximum Height Adjustment:	1 1/8"
Toe Space Clearance:	1"
	Minimum Height: 3 1/2"
	Maximum Depth: 3 1/2"
Gross Weight:	11.6 LBS.
Replacement Blade:	No. 556 Carbide-Tipped Blade

### LIMITED WARRANTY

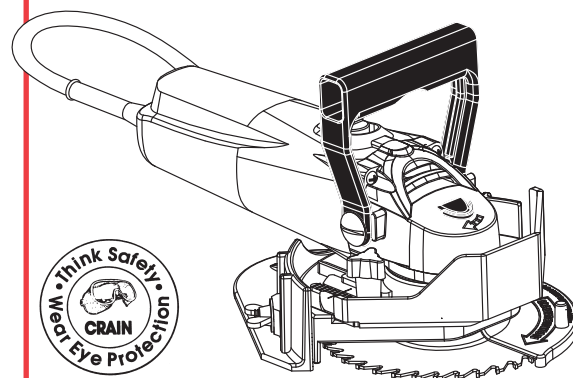
Crain warrants this saw to be free of defects in workmanship and quality of materials under normal use for a period of six months from the date of purchase. Not covered is the motor or motor brushes. Burnt motors or worn-out brushes will be repaired at a charge.

Any parts of this saw found defective subject to the guarantee will be replaced at no charge. Credit in full or part can not be extended by the distributor, nor will a new saw be given as a replacement or loaner.

Saws subject to this warranty must be accompanied by the same, and returned freight PREPAID to Milpitas, CA, and must be in assembled condition.

DATE OF MFG. \_\_\_\_\_

# INSTRUCTION MANUAL FOR



# CRAIN

## No. 575 MULTI-UNDERCUT SAW

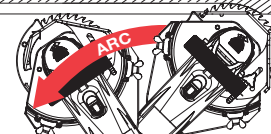
### ⚠ WARNINGS:

#### KICKBACK HAZARDS:

- **THIS SAW PLUNGE-STARTS. PLUNGE SLOWLY BEFORE PUSHING FORWARD!**
- **KEEP RPMs HIGH. DON'T FORCE THE SAW, ESPECIALLY WHEN NAILS MAY BE PRESENT. DO NOT OVERHEAT.**
- **HEIGHT ADJUSTMENT: USE ONLY ON LEVEL FLOORS. KEEP THE BOTTOM OF THE HEIGHT ADJUSTER FLAT ON THE FLOOR, AND KEEP BLADE PARALLEL TO THE FLOOR.**
- **ALWAYS PUSH SAW AGAINST BLADE ROTATION. NEVER PULL TOWARDS YOU OR RUN IN REVERSE.**

**SAFE OPERATING POSITION:  
KEEP KNEES AND OTHER BODY  
PARTS OUT OF KICK BACK ARC.**

**KNEEL TO THE SIDE!  
DO NOT USE STANDING UP!**



**CUTTING DIRECTION →**

## SAFETY FIRST

This Multi-Undercut Saw is designed for undercutting affixed wooden door jambs, moldings, or base, to allow new floor coverings to be fit underneath. Do not use this saw for sanding floors, cutting metal, or any other purpose not described in this instruction manual. Please read all instructions.

**HANDLES:** Keep both hands on the handles until the blade stops.

**KICKBACK HAZARDS:** In use, do not force the saw. Keep the saw RPMs high. Keep the height adjuster flat on the floor and the blade parallel to the floor. Angling may cause powerful kickback. Using dull blades puts load on the saw and increases kickback danger. Use only Crain replacement blades.

**EYE & EAR PROTECTION:** Wear safety glasses and use ear protection when using this saw.

**BLADE GUARD:** The blade guard attached to your saw is for your safety and protection. If it becomes damaged, do not operate your saw until it has been repaired. Always leave blade guard in operating position when using the saw.

**DOUBLE-INSULATED:** This tool is constructed with two separate layers of electrical insulation. A tool built with this insulation system does not need to be grounded.

**DANGEROUS ENVIRONMENTS:** Keep work area clean; clutter invites accidents. Do not use the saw on damp or wet floors. Be sure that there is good lighting. This saw may throw sparks. Make certain that flammable materials, especially explosive vapors, are not present.

**ACCIDENTAL STARTS:** Do not carry with fingers on switch or while plugged in. When carrying, blade must be stopped.

**CORD ABUSE:** Never carry the saw by the cord or yank the cord to disconnect from an outlet. Keep cords away from heat, oil, and sharp edges. To minimize power loss and prevent overheating, use maximum of 25 feet long and 16 AWG extension cord.

**DUST:** Wood and other dust from sawing can be a health hazard. Use protective dust mask and ventilation equipment.

**HAIR & CLOTHING:** Keep all loose hair and clothing away from the spinning blade at all times.

## WORKING TERMINOLOGY: see Figure 1

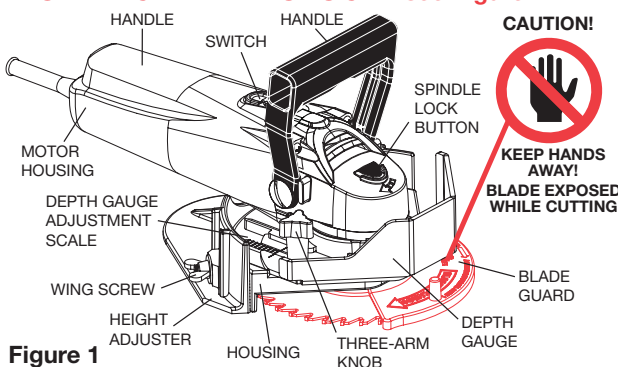


Figure 1

## BLADE REMOVAL: see Figure 2

- Switch off and unplug saw, with blade stopped.
- Retract the height adjuster flush with the housing to allow clearance for the hex wrench.
- Push the spindle lock button down with one hand and insert the hex wrench into the blade screw with other hand, then turn until the spindle engages with the spindle lock button (blade stops rotating).

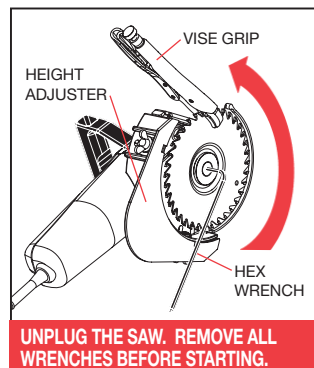


Figure 2

- Hold onto the motor housing; then, push hard on the hex wrench counter-clockwise to loosen. If the blade is very hard to remove, use a vise grip to hold the blade.

## BLADE INSTALLATION: see Figure 3

- Switch off and unplug saw, with blade stopped.
- Place the blade spacer over the spindle.
- Place the blade on top of the blade spacer.
- Place the blade clamp through the arbor hole of the blade with the bottom slot of the blade clamp properly aligned with the spindle.
- Screw in and re-tighten the blade screw. Push in the spindle lock button to tighten. Be sure to tighten firmly before use.

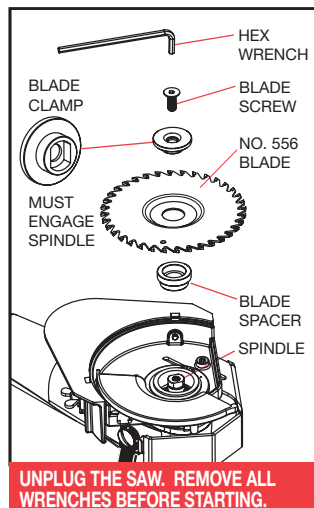


Figure 3

## HEIGHT ADJUSTMENT: see Figure 4

- Switch off and unplug the saw. Blade must be stopped.
- Loosen two wing screws on height adjuster about 1 1/2 to 2 turns. Do not loosen wing screws more than necessary.
- Adjust the height of the blade by moving the height adjuster up or down until desired height of cut is achieved. The inside of the height adjuster has 10 reference lines, in height increments of 3/32" (.093" - one blade thickness).
- Use the reference lines as a guide (Fig. 4). The housing must be set parallel to the floor. Make certain that the bottom edge of the housing is set parallel with a

reference line. This is critical for safety and straight undercutting. The maximum height adjustment is 1".

- Re-tighten the wing screws before use.

## DEPTH ADJUSTMENT:

- Switch off and unplug the saw. Blade must be stopped.
- The depth gauge controls depth of cut most accurately using the front depth gauge surface (Figures 5 & 6).
- To adjust, loosen the three-arm knob and move the depth gauge in or out as required (Figure 6).

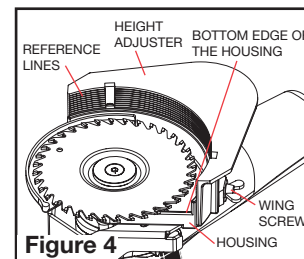


Figure 4

- An adjustment scale for the front depth gauge surface is provided behind the three-arm knob, with eight approximate 1/8" increments. The depth gauge permits the saw to be used at a 45° angle to the wall, but the depth of cut will be about 1/8" deeper than indicated by the scale.

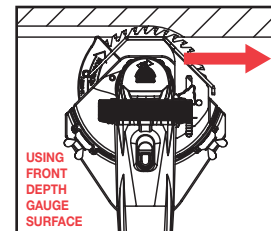


Figure 5

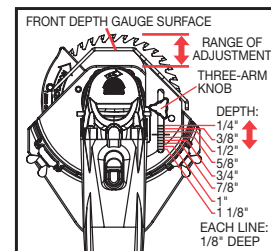


Figure 6

- Re-tighten the three-arm knob firmly before use.
- Set the depth of cut to no more than 1/2" to minimize the chance of hitting wall studs or nails, etc.

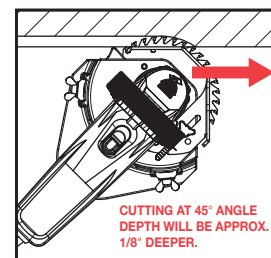


Figure 7

## USING THE SAW:

- Make sure the blade screw and handle screws are tightened securely. Make sure blade is parallel with the floor.
- Keep handle in vertical position for general undercutting.
- Turn the handle away from the toe kick for undercutting toe spaces (see Figure 8).
- Plug-in the saw; hold firmly and push the switch forward to turn the power ON.
- To start a cut, use the wall to push the blade guard back and expose blade. **DO NOT USE YOUR HAND!**

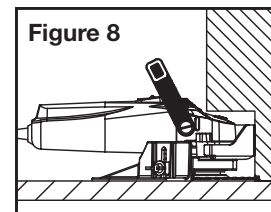


Figure 8