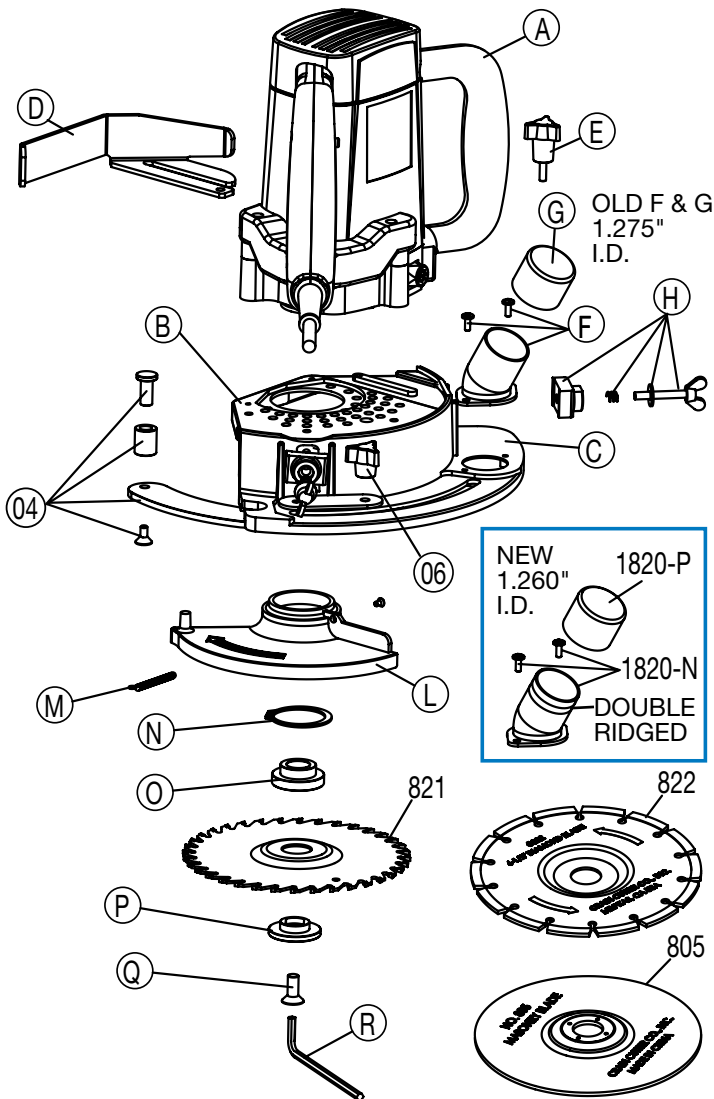


No. 812 Super Saw


NO. 812 SUPER SAW

Order No.	Description
1812-A	Power Unit, 120 volts
1812-B	Housing
1812-C	Height Adjuster & Stabilizer Assy. (includes Nos. 1812-06 & 1812-04)
1812-D	Depth Gauge
1812-E	Depth Gauge 3 Arm Knob & Screw
1812-F	OLD Vacuum Flange and Fastener (5)
1812-G	OLD Flange Cap
1812-H	Guide Washer Set (8)
1812-L	Blade Guard
1812-M	Blade Guard Spring and Fastener (3)
1812-N	Blade Guard Snap Ring
1812-O	Blade Spacer
1812-P	Blade Clamp
1812-Q	Blade Screw
1812-R	Allen® Wrench
1812-S	Carrying Case (not shown)
1812-T	Carrying Case Latch Set (2) (not shown)
1812-U	Switch (not shown)
1812-V	Power Cord (not shown)
1812-W	Brushes Set (2) (not shown)
1812-X	Top Cover for Power Unit (not shown)
1812-Y	Power Cord Strain Relief (not shown)
1812-Z	Black Pull Handle (not shown)
1812-01	Red Trigger Handle (not shown)
1812-02	Blue Trigger Handle (not shown)
1812-03	Blade Stop Assembly (not shown)
1812-04	Bumper Wheel & Fastener
1812-05	Brush Holder Assembly (2) (not shown)
1812-06	Stabilizer 3 Arm Knob Only
1820-N	NEW Dust Port w/Screws (4)
1820-P	NEW Dust Port Cap
1820-Z	Return Spring Screw Only (not shown)